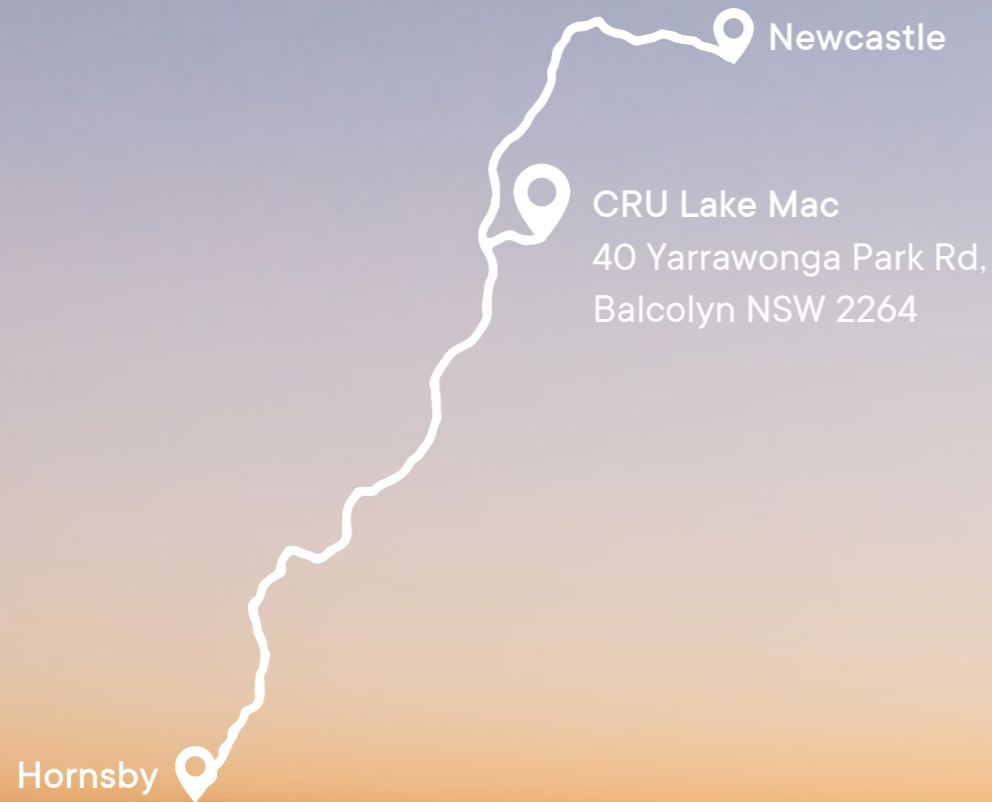


# CRU<sup>®</sup> Lake Mac

*Perfect for your school, church, band or community camp!*



**CRU® Lake Mac is conveniently located on the stunning shores of Lake Macquarie, just over 1 hour from Hornsby or Newcastle.**



# Contents

---

About CRU	3
About CRU Lake Mac	4
The ideal camp venue	5
Meeting rooms for groups of all sizes	7
Breakout and small meeting rooms	11
Lake Mac site map	13
Accommodation	15
Classic accommodation	19
Bivouac camps	20
Dining	21
Activities	24



# About CRU®

CRU is a Bible-based, interdenominational Christian organisation whose mission is to help the kids and youth of Australia know and follow Jesus.

CRU runs CRU Holiday Camps for thousands of kids each year, and supports chaplains, teachers and students in Christian ministry in their schools and lunchtime CRU Groups. CRU also operates two campsites, CRU Lake Mac and CRU Galston Gorge, where a number of our CRU Educational Camps are held.

To find out more about CRU, head to our website [www.cru.edu.au](http://www.cru.edu.au)



**CRU®** | Holiday Camps



**CRU®** | Groups



**CRU®** | Educational Camps



**CRU®** | Galston Gorge



## About CRU® Lake Mac

Set on the picturesque shores of Lake Macquarie with 6.5 hectares of water frontage and an additional 40 hectares of adjoining bushland, the CRU Lake Mac Camp and Conference Centre provides a perfect setting for your next camp. You can access an unrivalled range of water, land or bush-based activities.

- Enjoy the comforts of 5 brand new ensuite cabins with separate rooms for teachers/leaders (accommodating up to 260 guests).
- Each new cabin has a large common room and lounge area perfect for breakout spaces.
- Budget-friendly A-frame cabins with separate leaders' accommodation (up to 120 guests) and camping options (up to 120 guests) also available.
- Multiple conference/meeting spaces are available across the centre for between 90-300 guests, each equipped with A/V capabilities.

# The *ideal camp venue* for any group

No matter what kind of camp, retreat or getaway you are planning, CRU Lake Mac has the accommodation options, facilities and activities you are looking for. Our experienced booking team will work with you as you plan your event, and our friendly site staff will welcome you when you arrive and make sure you have a comfortable stay.

For groups wanting to run their own program, CRU Lake Mac has all that you need available on site including fully-equipped meeting rooms, breakout spaces, delicious snacks and meals, access to a range of on-site activities, and comfortable beds for a good night's sleep.

## School camps



Your school can run its own camp program at CRU Lake Mac. We provide the venue, meals and accommodation and you provide the program and staff. As well as access to a range of free on-site activities, a number of instructor-led activities may also be available at an additional cost. Popular school camps include outdoor activity camps, leadership camps and study skills camps.

On our fully-programmed CRU Educational Camps, we share the load and help you plan and run your camp. Chat with us to find out more.

## Band and music camps



Spending time together on camp is a perfect way for your musicians, singers and performers to learn and improve as individuals and as an ensemble. CRU Lake Mac's large meeting spaces and smaller rooms are ideal for rehearsals, workshops and tutorials. During breaks, guests can enjoy the activities or just relax in the beautiful lakeside setting. The site is the ideal getaway for community bands, school bands, choirs, vocal groups or performance groups.



## Church camps, conferences and retreats



Get away with your church family, youth group or ministry team and take some uninterrupted time out to relax, reconnect and build community at CRU Lake Mac. Utilise large meeting spaces and smaller rooms for talks, worship, seminars, prayer and discussion groups. Share time together and grow relationships as you enjoy delicious meals, the beautiful views and on-site activities.

## Community groups, sports camps and family reunions



Special interest groups such as craft groups, photography clubs, sporting teams, service clubs and extended family reunions can enjoy time catching up together, exploring their common interests and enjoying the beautiful location at CRU Lake Mac. Comfortable ensuite accommodation, delicious food, large and small meeting rooms, and a range of on-site activities provide the perfect location for a time to remember.

# Meeting rooms for groups of all sizes

Our large meeting rooms can seat from 90 to 300 people in a meeting hall configuration, perfect for talks, presentations and rehearsals. All rooms have flexible layout options to suit your different needs and activities.

	Conference Room	Boathouse	Hilltop Hall	Bay View
Seats	300+	150	130	90
Size	376m <sup>2</sup>	167m <sup>2</sup>	120m <sup>2</sup>	89m <sup>2</sup>
Air conditioning	N	Y	Y	Y



Pictured: Boathouse meeting room

## All meeting rooms have:



## Boathouse meeting room

Designed to take advantage of the stunning views and lake breezes. The Boathouse opens on three sides to capture the natural airflow and vistas across the lake to provide guests with a unique meeting space that brings the outside in.

Run your programs in style in this fully equipped meeting room with stunning lake views. Including a servery, the Boathouse is available for waterside dining, making this the perfect space for lunch or dinner meetings.

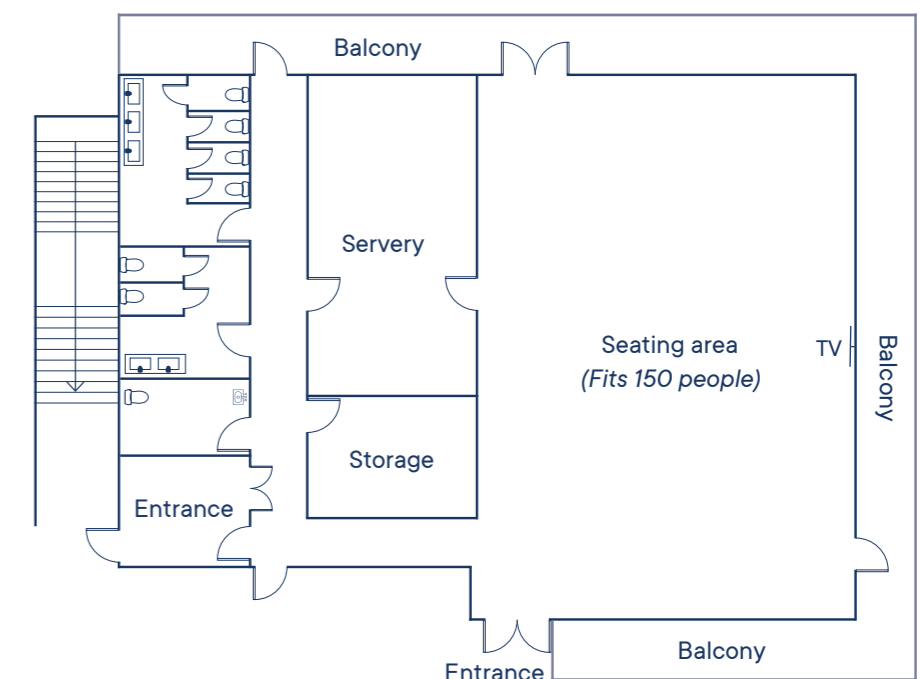
### Flexible layout options with access to:



150 chairs



20 tables, up to 8 per table



## Bay View meeting room

Designed for groups of up to 90, the Bay View meeting room is the ideal room for smaller groups to meet together or for breakout sessions for larger groups.

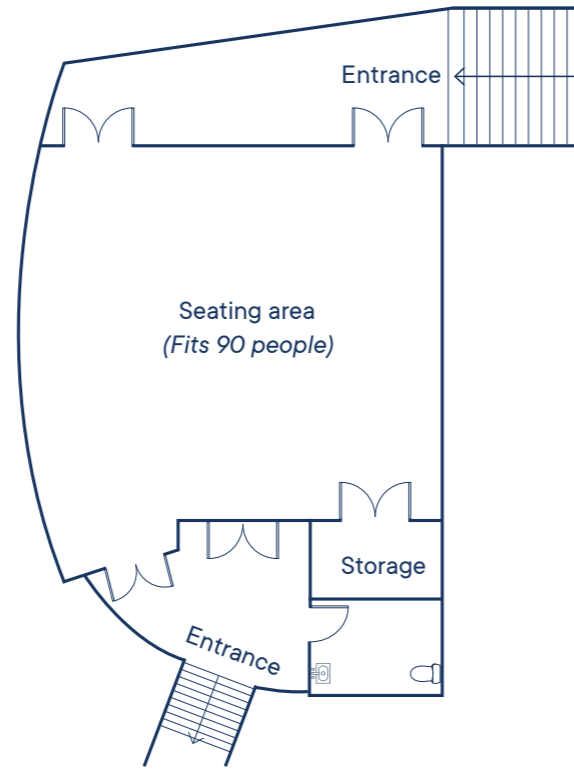
Flexible layout options with access to:



90 chairs



15 tables, up to 6 per table



## The Conference Room

Protected from the weather, with the option to be open or fully enclosed, this carpeted meeting space is available for gatherings of more than 300 guests. Speak with our bookings team to confirm availability of this space for your group.

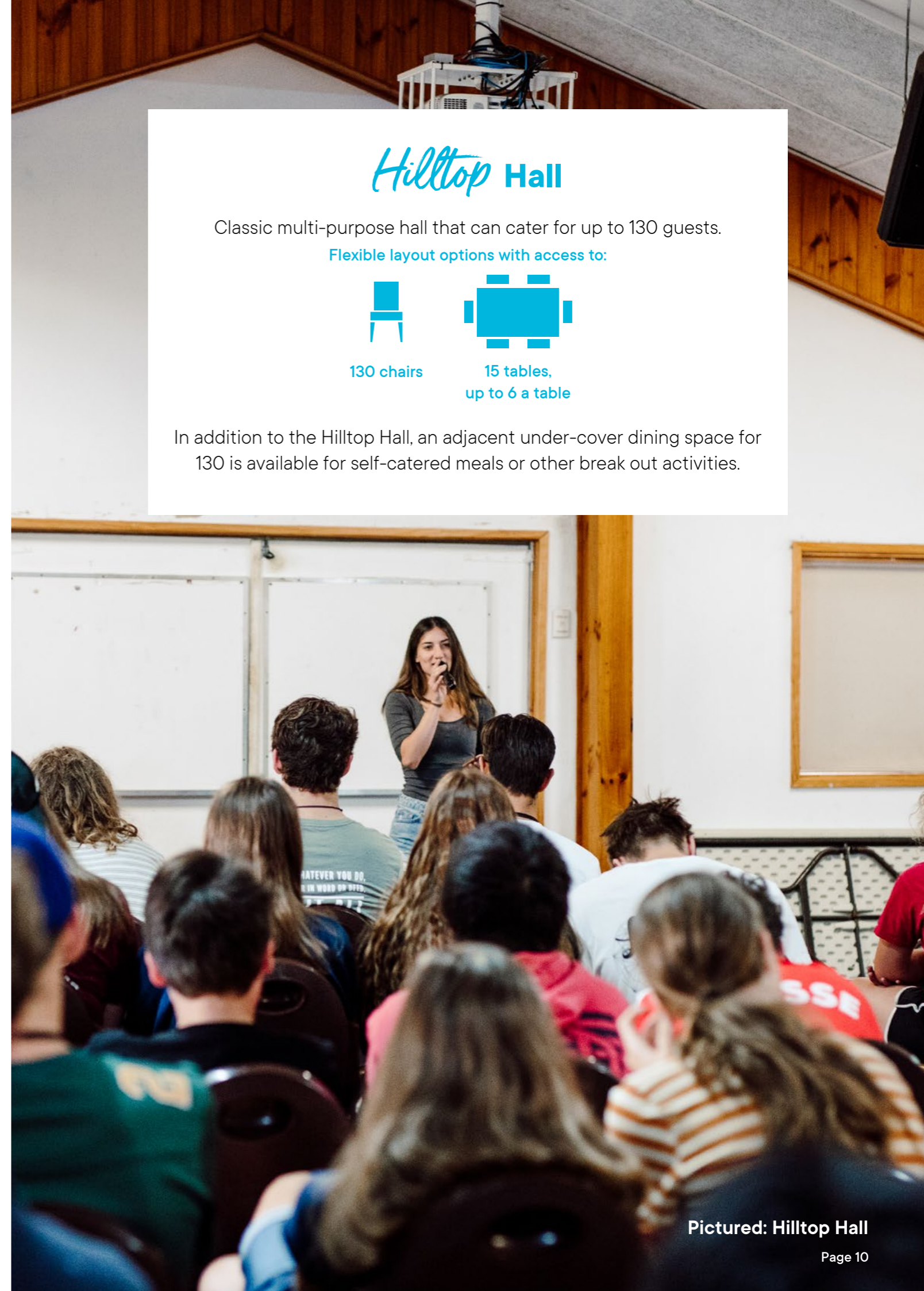
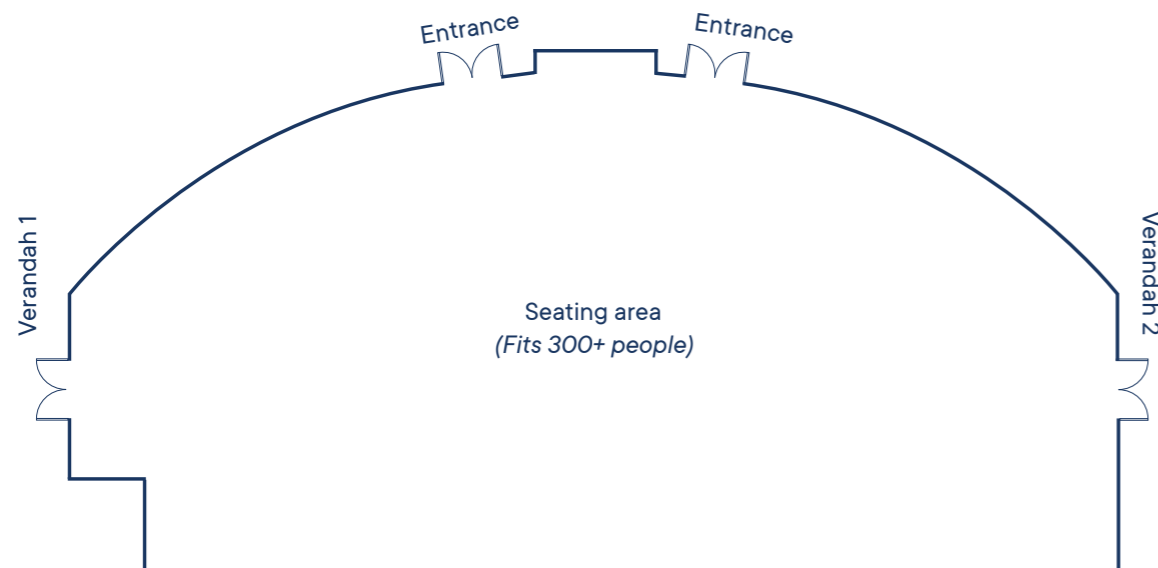
Flexible layout options with access to:



300 chairs



50 tables, up to 6 per table



## Hilltop Hall

Classic multi-purpose hall that can cater for up to 130 guests.

Flexible layout options with access to:



130 chairs



15 tables, up to 6 a table

In addition to the Hilltop Hall, an adjacent under-cover dining space for 130 is available for self-catered meals or other break out activities.

# Breakout & small meeting rooms

Our breakout and small meeting rooms can seat from 10 to 30 people. Groups will only have access to the common rooms and lounges of the cabins they have booked. All spaces have WiFi and mobile phone coverage.

No. of rooms	Retreats x2	Cabin common rooms x5	Cabin lounge areas x5	Outdoor gazebos x5
Size	36m <sup>2</sup>	38-48m <sup>2</sup>	10m <sup>2</sup>	12m <sup>2</sup>
Seats	30	30	10	12
Tables	Y	Y	N	Y
Air conditioning	Y	Y	Y	N
A/V	Y	Y	N	N
Whiteboard	Y	Y	N	N
Wheelchair access	Y	Y	N	Y

## Cabin common rooms



Seating for 30 people - perfect for a chill out or breakout meeting space with WiFi, A/V and folding tables available for use.

## Cabin lounge areas



Seating for 10-12 people, perfect for small group discussions or workshops.

## Retreats

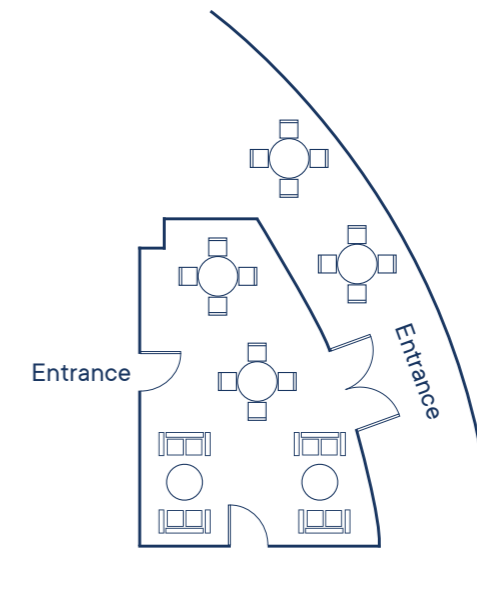
Bay View Retreat and the Jetty View Retreat

The retreats are two quiet spaces especially for teachers/leaders to 'get away' from the rest of camp or as breakout areas depending on the style of camp. Conveniently located at each end of the dining hall so you can grab a tea or coffee, enjoy the comfortable sofas and take some time to wind down or get some work done.

Access to the leaders retreats is allocated as a part of your group booking and may be shared when there are multiple groups on site.



Pictured:  
Dining hall



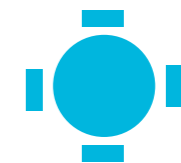
Flexible space that can be utilised for small group discussion, activities, individual reflection or quiet work space.



Sofas



30 chairs



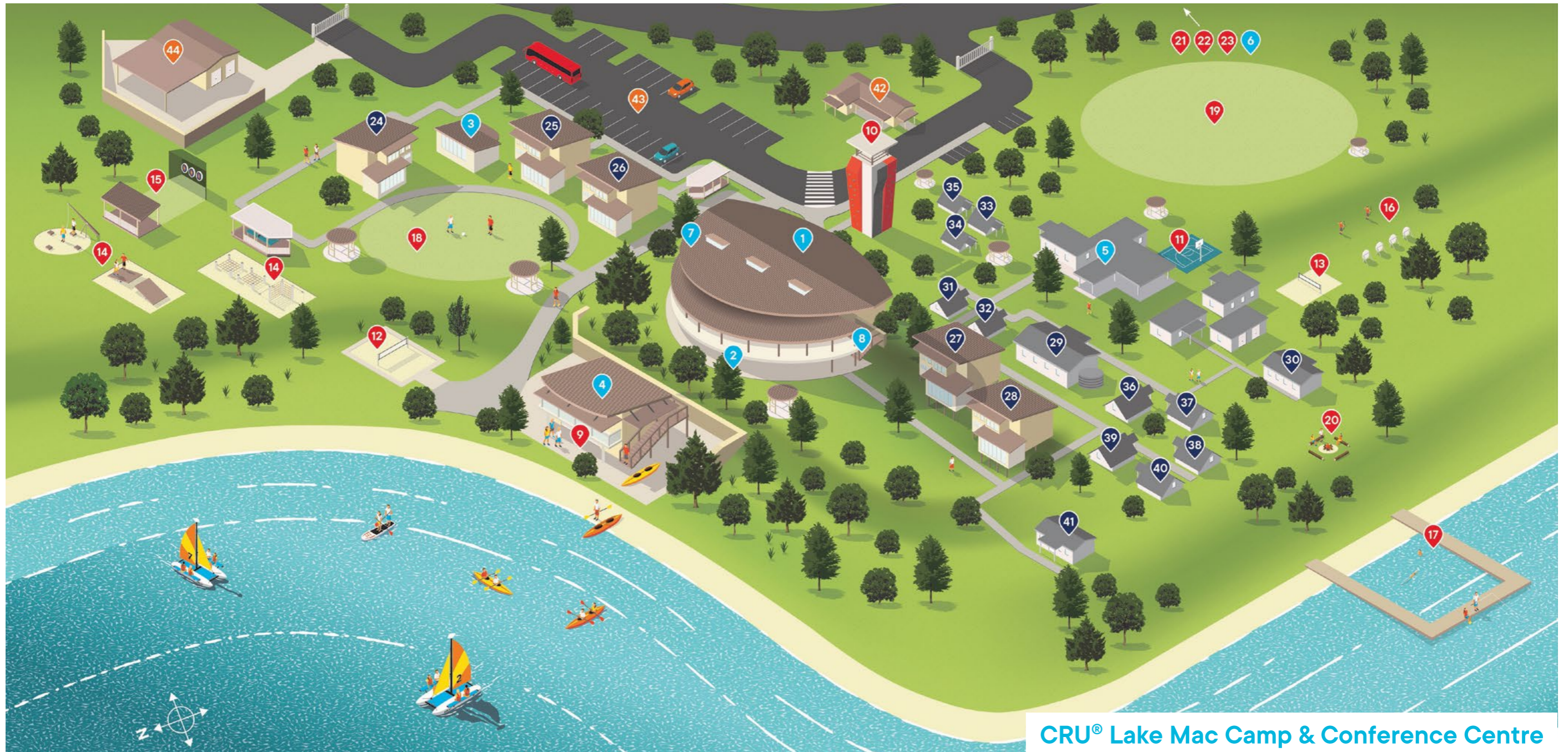
4 round tables,  
up to 4 per table

## Outdoor gazebos

Located throughout the site are 5 outdoor gazebos that can be used as breakout spaces in fine weather. Each seats up to 12.



# Site Map



CRU® Lake Mac Camp & Conference Centre

## Conference facilities

- 1 Dining Hall
- 2 Conference Room
- 3 Bay View Meeting Room
- 4 Boathouse Meeting Room
- 5 Hilltop Hall
- 6 The Shelter
- 7 Bay View Retreat
- 8 Jetty View Retreat

## Activities

- 9 Boathouse
- 10 Abseiling/Rock Climbing
- 11 Basketball
- 12 Beach Volleyball 1
- 13 Beach Volleyball 2
- 14 Challenge Course
- 15 Archery Range 1
- 16 Archery Range 2

- 17 Jetty
- 18 Recreation Space 1
- 19 Recreation Space 2
- 20 Campfire
- 21 The 100 Acres
- 22 Bushwalking
- 23 Orienteering

## Accommodation

- |                           |                           |                        |
|---------------------------|---------------------------|------------------------|
| 24 Dolphin                | 30 Teachers/Leaders Cabin | 36 A-frame 6           |
| 25 Stingray               | 31 A-frame 1              | 37 A-frame 7           |
| 26 Wobbegong              | 32 A-frame 2              | 38 A-frame 8           |
| 27 Sea Hawk               | 33 A-frame 3              | 39 A-frame 9           |
| 28 Pelican                | 34 A-frame 4              | 40 A-frame 10          |
| 29 Teachers/Leaders Lodge | 35 A-frame 5              | 41 Honeymooners' Lodge |

- 42 Office
- 43 Carpark
- 44 Maintenance Shed and Carport



# Accommodation

**Ensuite cabins**  
- each cabin  
sleeps 52

**Classic  
accommodation**  
- sleeps 120

## Bay View Cabins

- Dolphin
- Stingray
- Wobbegong

## Jetty View Cabins

- Sea Hawk
- Pelican

## A-frame Cabins and Lodges

## Ensuite cabins



## Each cabin contains:



**8 bunk bed rooms**  
*6 people each*

Over two floors, 48 guests can be accommodated in bunk rooms, each room sleeping 6.



**2 Teacher/  
Leader rooms**

Each floor has a twin room ideal for teachers or leaders. Beds in these rooms may be set up as one King bed for a couple on request.



**Ensuite  
bathrooms**

Includes a double sink vanity, separate toilet and shower.



**Wheelchair-  
friendly room**

With an accessible ensuite bathroom.



**Common room**

Seating for 30 people - perfect for a chill out or breakout meeting space with WiFi, A/V and folding tables available for use.



**Lounge area**

Seating for 10-12 people, just right for small group discussions or workshops.



**Air conditioning**

Reverse cycle air conditioning for comfort all year round.



**Up to 260 guests**

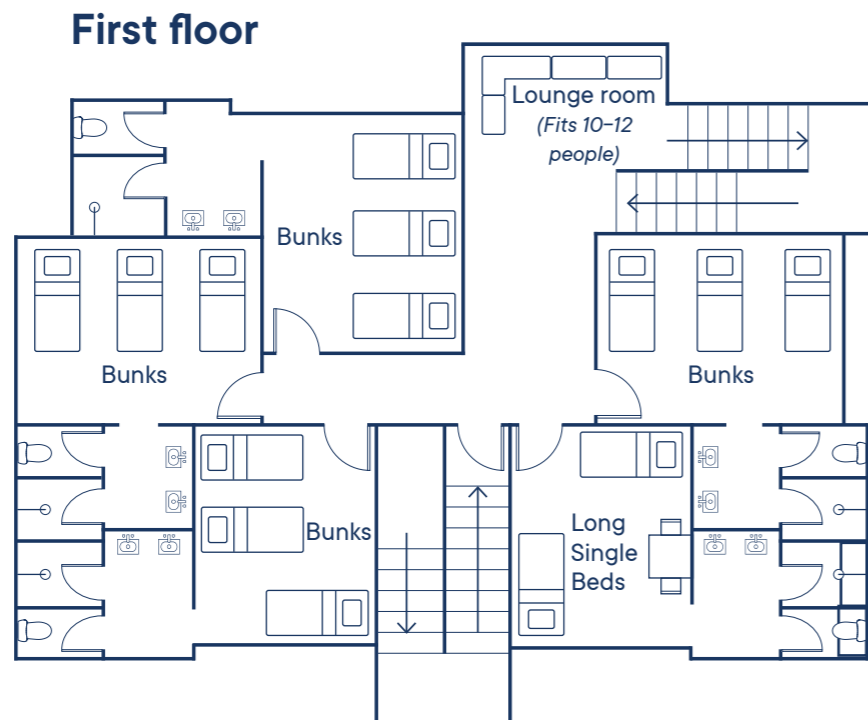
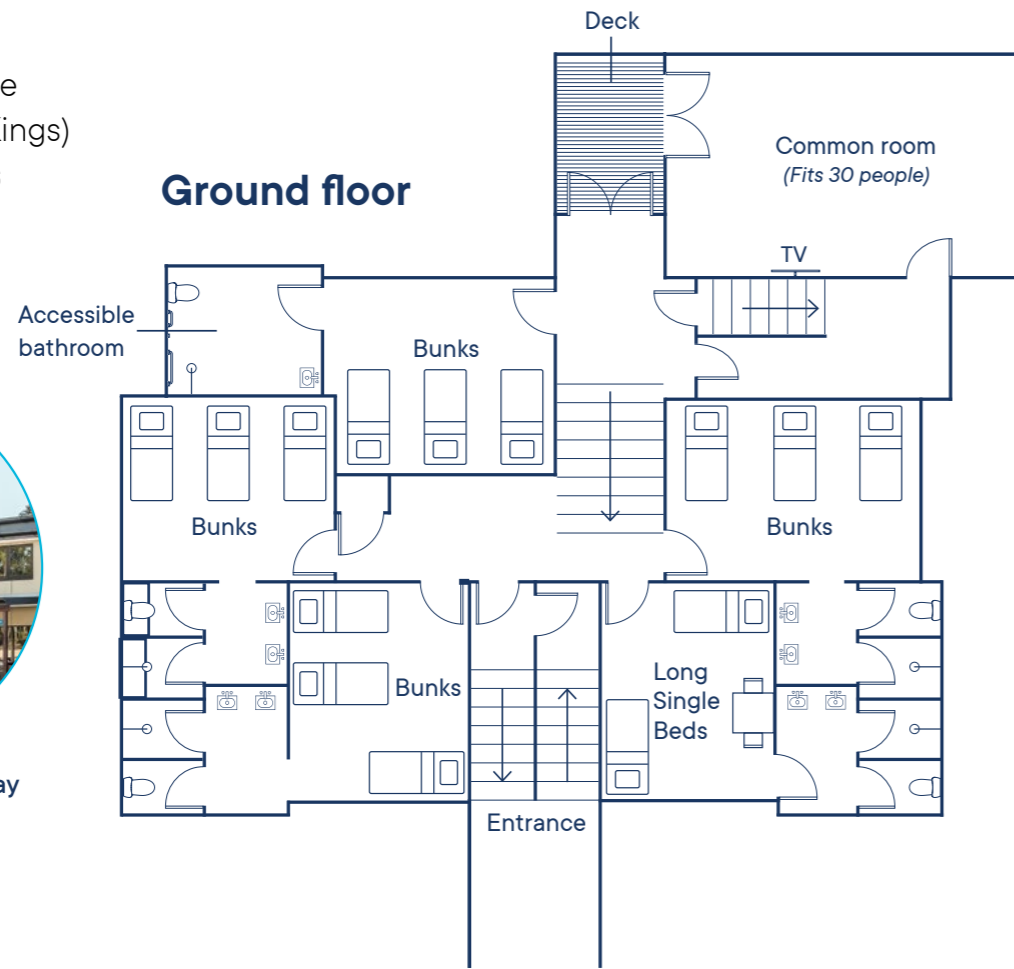
Each floor can be independently accessed, providing flexibility for large and small groups.

# Bay View cabins

Dolphin, Stingray &  
Wobbegong  
Each sleeps 52 people  
4 Long Singles (or 2 Kings)  
24 Long Single Bunks



Pictured: Dolphin & Stingray

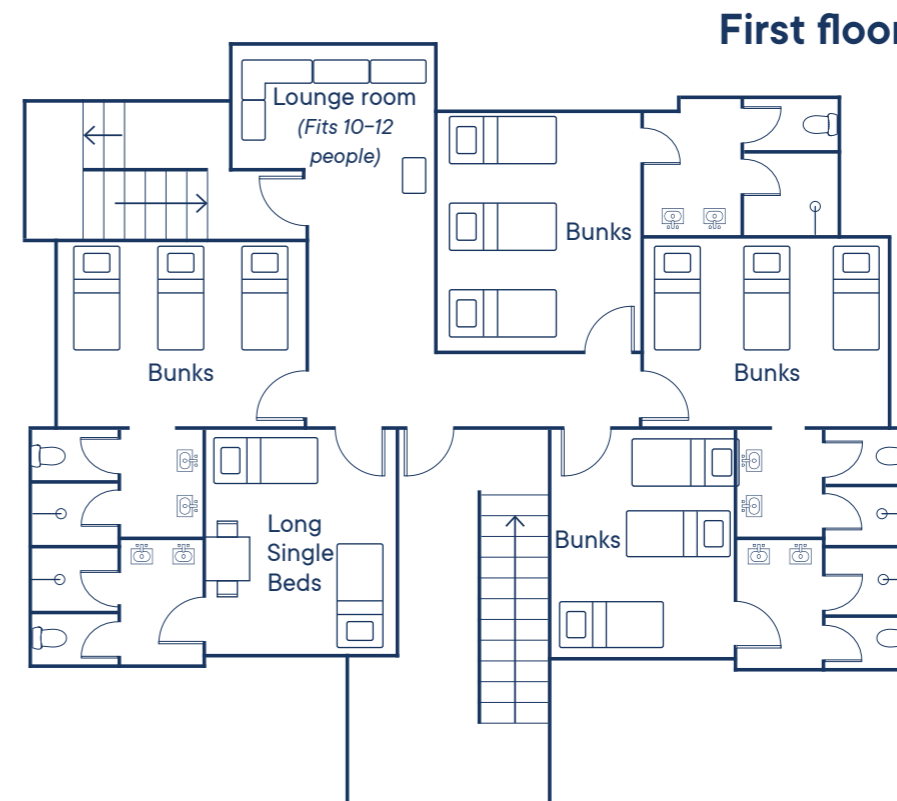


# Jetty View cabins

Sea Hawk & Pelican  
Each sleeps 52 people  
4 Long Singles (or 2 Kings)  
24 Long Single Bunks



Pictured: Sea Hawk & Pelican



# Classic A-frame accommodation

Our classic Lake Mac site can accommodate 120 people in a mixture of air-conditioned huts and cabins.



**10 A-frame huts**

Each sleeps 10 guests



**4 Teacher/Leader cabins**

Each cabin has 3 beds



**1 Teachers' lodge**

The lodge has 8 beds

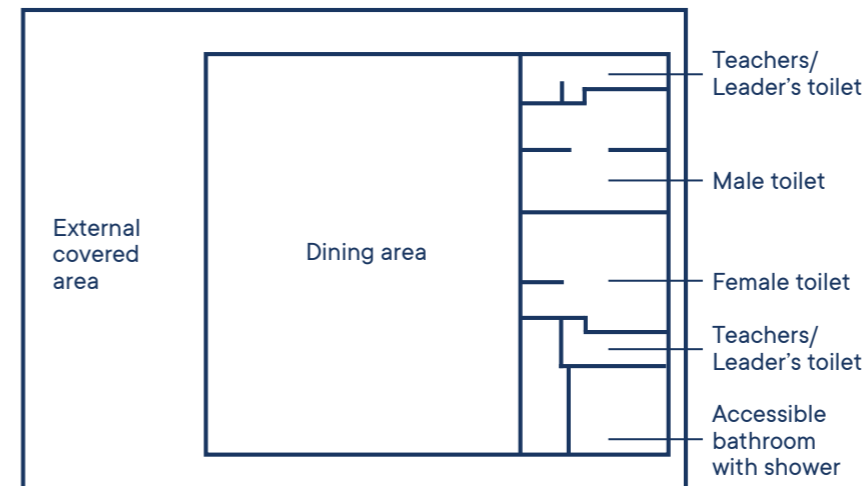
To discuss your group's specific requirements, contact our Bookings Manager on (02) 9653 1676 (opt. 2) or [groupbookings@cru.edu.au](mailto:groupbookings@cru.edu.au)

# Bivouac camps

- Indoor Meeting/Picnic Area – seats up to 120 guests.
- Covered outdoor area available as an additional overflow/breakout space.
- Toilet facilities (including accessible bathroom) and a shower (in the accessible bathroom).
- Tables and chairs will be available for use.
- No air conditioning but power outlets are available.



Pictured:  
The Shelter



The Shelter Floorplan



## Camping area

Up to 120 people. Rent our tents or BYO.



## Duke of Edinburgh

The 100 Acres is perfect for introductory Duke of Ed programs – speak to us about how we can tailor a program to suit your group's needs.



## Bushwalks

Access a number of bushwalking tracks in a safe environment.

# Dining at Lake Mac



Meal times are important on camp - not only as a time to eat and refuel but also as a time when everyone gets together. They are a time where friendships are made and lives shared.



The food served at CRU sites is delicious and our years of experience in running camps help us to design popular menus for campers of all ages. For most meals, side dishes including salads and vegetables are served buffet style so campers can choose the things they like. Each day at camp, 3 meals and 3 snacks are served.

Meals are served in the centrally located Dining Hall which overlooks the picturesque lake. Seating up to 360 guests at any one time, the dining hall can be divided into three smaller rooms to allow separate dining spaces for multiple groups at one time. Meals may also be served at the Hilltop Hall or the Boathouse depending on your camp arrangements.

## Sample menu

Day*	Hot Breakfast	Lunch	Dinner	Dessert
Day 1	Ham & cheese croissants, plain croissants, crumpets	Beef nachos, corn chips, salad, sour cream, cheese and guacamole	Chicken schnitzel, gravy, potato bake and mixed vegetables	Ice cream sundaes
Day 2	Bacon & scrambled eggs, tomato halves	Chicken burgers: buns, salad, sliced cheese, pineapple, beetroot, sliced watermelon.	Pasta bolognese, garlic bread and salad or Beef stroganoff, pasta and mixed vegetables	Ice cream sandwich slice
Day 3	Pancakes, maple syrup, cream, butter, blueberries, strawberries	Hamburgers: buns, salad, sliced cheese, pineapple, beetroot, sliced watermelon	Honey soy chicken, rice and mixed vegetables or Butter chicken, rice, mixed vegetables and poppadums	Meringues, berries, cream

\*The following sample menu is subject to change.

## Delicious food



A range of kid-friendly salads served buffet style with every lunch and dinner.



Feel at home with access to a range of hot and cold drinks throughout the day including coffee to keep you going all day long!



Get a great start to the day with our breakfast options including a hot breakfast, range of cereals, fruits, yoghurt and toast served with various spreads. Keep hydrated with your choice of apple juice, orange juice or milk.



Morning and afternoon tea is served each day, including platters of fresh fruit and the cooks' choice of a freshly baked treat. Examples include; scones with jam and cream, cakes and slices, home-made biscuits, chocolate brownies and muffins. Drinks offered include either flavoured milk or cordial.



Supper is served at the end of each day. Platters are prepared by our kitchen staff and may include fruit, biscuits, cakes and slices, potato crisps, popcorn, cheese and crackers, veggie sticks, cinnamon toast, scones or muffins.

Please contact the Bookings Manager on (02) 9653 1676 (opt. 2) or [groupbookings@cru.edu.au](mailto:groupbookings@cru.edu.au) to discuss your needs.

# Special dietary requirements



## We want everyone to feel welcome at camp.

We are delighted to cater for the following special dietary requirements.\*

- Each special diet provided consists of all main meals, morning and afternoon tea as well as supper.
- See the sample menu on Page 21 to assist those needing to bring their own supplements from home. Fridge & freezer space is available as well as a microwave for reheating and a Gluten Free toaster.

- |                         |                                      |
|-------------------------|--------------------------------------|
| • Dairy / Lactose Free  | • No Pork                            |
| • Gluten Free (Coeliac) | • No Shellfish                       |
| • Vegetarian            | • Gluten Free & Dairy / Lactose Free |
| • Vegan                 | • Wheat Free & Dairy / Lactose Free  |
| • Wheat Free            | • Vegetarian & Dairy / Lactose Free  |
| • No Beef               | • Vegetarian & Gluten Free           |
| • No Beef or Pork       | • No Whole Egg                       |
| • No Fish               | • No Whole Peanuts / Tree Nuts       |

If your special diet is not listed above please contact the Bookings Manager on (02) 9653 1676 (opt. 2) or [groupbookings@cru.edu.au](mailto:groupbookings@cru.edu.au) to discuss your needs.

### ALLERGIES AND ANAPHYLAXIS TO VARIOUS FOODS

The site does not use whole nuts or nut pieces - however as a commercial kitchen, we cannot provide food that is free of traces of nuts or other allergens, or guarantee that a special diet is free from cross-contamination with other food items. If there is any concern, guests are recommended to bring their own food. Please contact the Bookings Manager on (02) 9653 1676 (opt. 2) or [groupbookings@cru.edu.au](mailto:groupbookings@cru.edu.au) for further information.

# On-site activities

Enjoy a wide range of on-site activities as part of your stay. Take a stroll along the lakeshore or explore our bushland trails. Enjoy spending time with friends and have fun together playing games, activities and sports.



### Lakeside walks

Walk along the shore and enjoy the tranquil lake setting.



### Nature walks

40 hectares of bushland to explore.



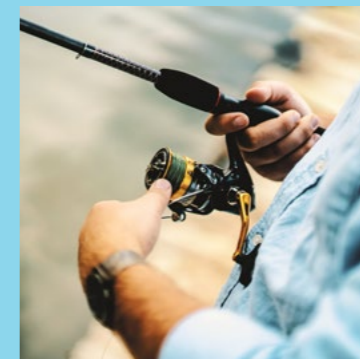
### Picturesque jetty

Access the jetty to fish, watch water activities or just to sit, relax and enjoy the view.



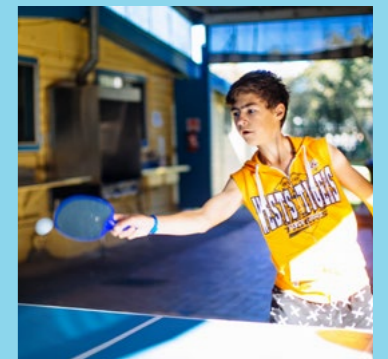
### Basketball space

Challenge friends to a basketball shootout or game.



### Fishing

BYO gear and cast a line from the jetty or lake shore.



### Table tennis

An activity loved by people of all ages; bats and balls available or if you're a serious player, bring your own.



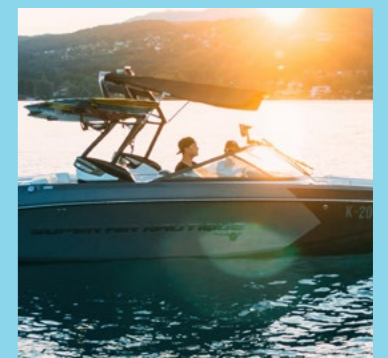
### Beach volleyball

2 beach volleyball courts perfect to enjoy as a group activity or in free time.



### Oval spaces

For ball games and group activities.\*



### BYO boats

Trailer parking is available on site with a deep water ramp located 1km away.

\*Equipment provided for cricket, soccer, football and softball

# Additional activities *on land*



A range of optional instructor-led activities are available on site including archery, abseiling, rock climbing and challenge course. The availability of activities and instructors is confirmed no more than 8 weeks before camp.

To discuss your group's specific requirement, contact our Bookings Manager at (02) 9653 1676 (opt. 2) or [groupbookings@cru.edu.au](mailto:groupbookings@cru.edu.au)



**Archery**

Find the bullseye and compete with your friends.



**Abseiling**

Abseil down a 13m four-faced tower. Multiple campers can abseil at the same time.



**Rock climbing**

Conquer the urban wall, the overhang, the wooden planks and the feature wall. Each side presents a new climbing challenge.



**Challenge course**

Work as a team to conquer the different elements of the challenge course.

# Additional activities *on water*



One of the most memorable things about CRU Lake Mac is being so close to the beautiful Lake Macquarie. For many campers, the experience of sailing or paddling on the lake stays with them for decades.

CRU is now able to offer even more water based activities including sailing, canoeing, kayaking, dragonboating and giant stand up paddle boarding. Hire fees apply and a qualified instructor may be required for some activities.



**Sailing**

Sail around the picturesque shores of Lake Mac with CRU's fleet of catamarans and sail boats.



**Canoes & kayaks**

Enjoy a gentle or competitive paddle around the foreshore.



**Dragonboat**

Work in harmony to steer and paddle a dragonboat around the lake. Fits 22 people.



**Giant paddleboards**

Enjoy a fun group workout on CRU's giant SUPs. Each can fit 6-8 people.

# BOOK TODAY



[crulakemac.com.au](https://crulakemac.com.au)



(02) 9653 1676 (opt. 2)



[groupbookings@cru.edu.au](mailto:groupbookings@cru.edu.au)



Lake Mac

The Crusader Union of Australia  
ABN 90 213 359 332 | (02) 9653 1676 (opt.2)  
40 Yarrowonga Park Rd, Balcolyn NSW 2264  
[groupbookings@cru.edu.au](mailto:groupbookings@cru.edu.au)